



NONWOVEN & TEXTILE

IMPROVE PRE-NEEDLING AND VISUAL APPEARANCE

ELLIPTICA TYPE DF-4 NEEDLELOOM

HIGH VISUAL SURFACE QUALITY

The new Elliptica Type DF-4 needleloom processes light products at high-speed while providing the assurance that quality is the priority. Available in large widths, it provides optimized pre-needling consolidation to ensure an even visual appearance. This needleloom is the preferred equipment when quality aspects of high-grade fabrics are important.

This consideration of quality is achieved thanks to a single needle per hole, which does not cause marks. The elliptical process can reduce stretching by 30-50% in a first needleloom when producing very light felts. ANDRITZ oil-lubrication technology in combination with the renowned ANDRITZ needleloom frame allows less maintenance and longer service life.

This is a cutting-edge development thanks to a compact, simple, and reliable design. All of this makes the Elliptica needleloom an essential asset on modern lines that are used for high quality fabrics. Customers are invited to run trials in our ANDRITZ Needlepunch technical center, France, to verify the improved appearance and productivity increase.

ANDRITZ

ENGINEERED SUCCESS

Elliptical processing for best appearance

TOP QUALITY PRE-NEEDLING

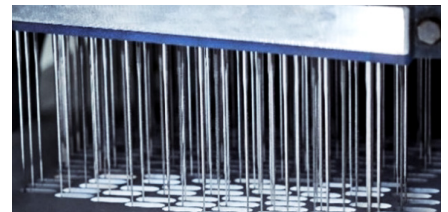
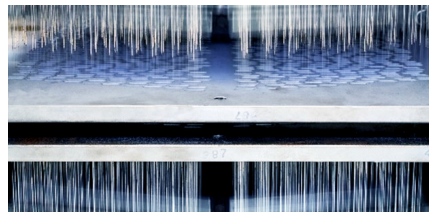
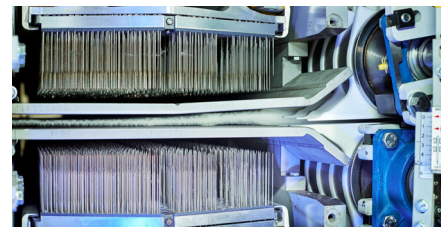
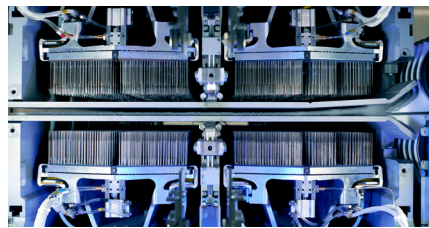
Thanks to a simple and reliable design, the Elliptica needleloom is available in double stroke mode type DF-4 as well as single stroke type SD-2. It ensures quick and cost-oriented maintenance in addition to a competitive capital investment (sharing the well-known ANDRITZ needleloom frame). Its ability to adjust the advance stroke-set-up during operations is surely a differentiating asset on the market. In order to ensure a safe production process, the elliptical movement and related parts included in the ANDRITZ housing are completely protected.

MAIN SPECIFICATIONS

- 40 to 60 mm stroke amplitude
- Versatile needling
- Working width from 2.70 to 8.10 m (larger for paper felts)
- Up to 1,200 rpm (pre-needling)
- Automatic, infinitely variable advance stroke from 0 to 10 mm based on the needle pattern, which can be easily adjusted from the control panel during operations
- Elliptica Type DF-4 (4 boards) or SD-2 (2 boards) are available with up to 16,000 needles/m
- Only one needle per hole
- No marking
- Same footprint as in a non-elliptical version

YOUR BENEFITS

- Enhanced visual surface quality
- Improved product quality and uniformity
- No fabric delamination in the needling phase
- Low maintenance requirement
- High durability at lower costs
- Compact machine
- Oil lubrication: greater reliability
- Perfect for demanding markets such as automotive, paper felts, spunbond products, synthetic leather...



EUROPE

ANDRITZ Asselin-Thibeau SAS
Elbeuf, France
p: +33 (232) 96 42 42
asselin-thibeau@andritz.com

USA

ANDRITZ Inc.
Spartanburg, USA
p: +1 (864) 587 4848
nonwoven-america@andritz.com

CHINA

ANDRITZ (China) Ltd.
Wuxi, P.R. China
Phone: +86 (510) 8536 1269
nonwoven-china@andritz.com



All data, information, statements, photographs and graphic illustrations in this leaflet are without any obligation and raise no liabilities to or form part of any sales contracts of ANDRITZ AG or any affiliates for equipment and/or systems referred to herein. ANDRITZ AG 2024. All rights reserved. No part of this copyrighted work may be reproduced, modified or distributed in any form or by any means, or stored in any database or retrieval system, without the prior written permission of ANDRITZ AG or its affiliates. Any such unauthorized use for any purpose is a violation of the relevant copyright laws. ANDRITZ AG, Statterger Strasse 18, 8045 Graz, Austria. Flyer Elliptica type DF-4 02.2024 EN

